



CEPSA TOWER

Norman Foster

María Cristina García Palmero

INDEX

1. INTRODUCTION
2. DESCRIPTION
3. STRUCTURE
4. INDOORS DESCRIPTION
5. BUILDING'S STRATEGIES

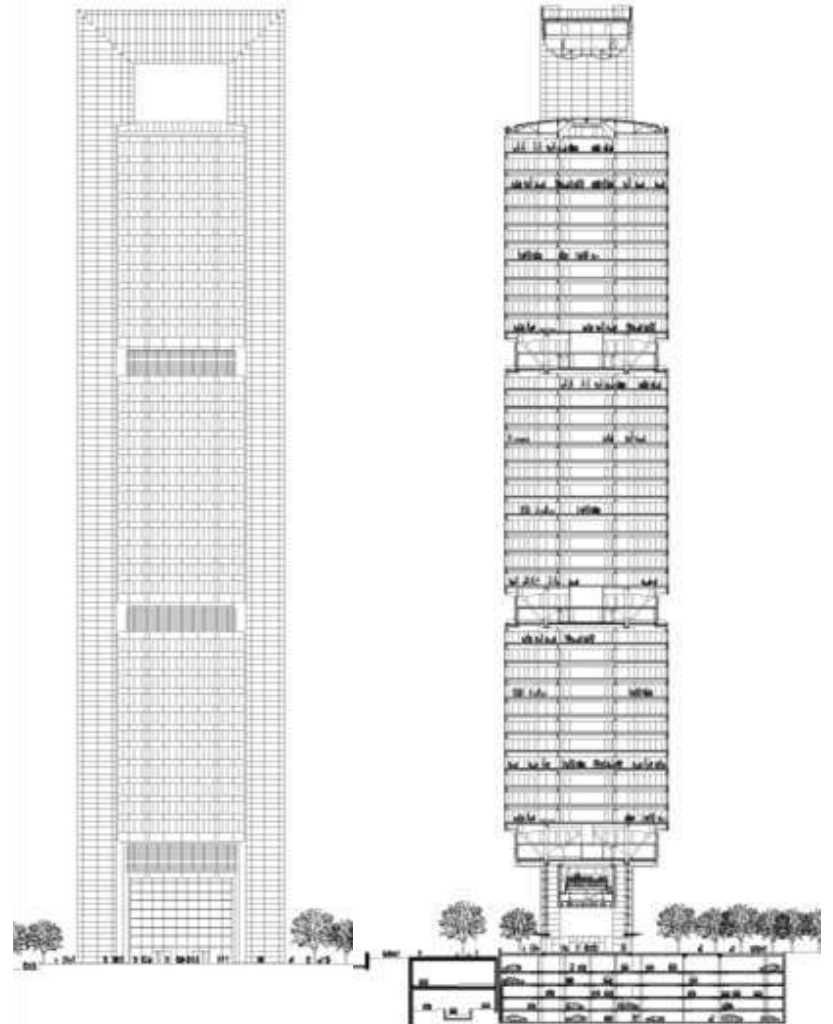
1. INTRODUCTION

- Four Towers Business Area, Madrid
- Caja Madrid, Spain's oldest savings bank.
- Cepsa, Spanish Petroleum Company.



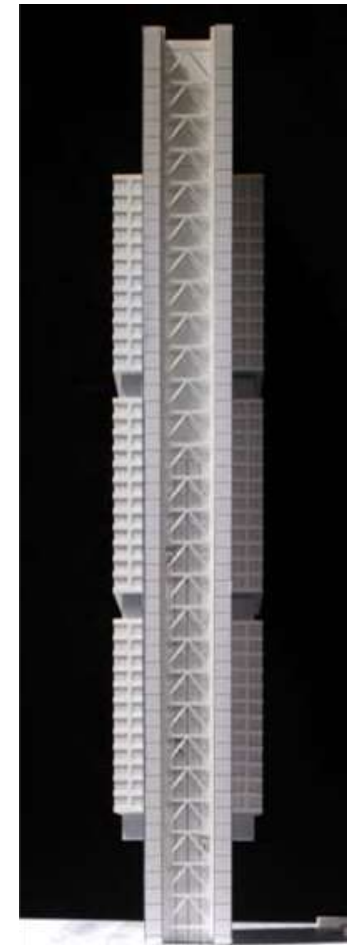
2. DESCRIPTION

- Five new towers, to be designed by leading international architects.
- Architect: Norman Foster.
- High: 250 m. and 45 floors.
- From the main lobby to the top are formed three groups of 11 office floors each, separated by technical floors.



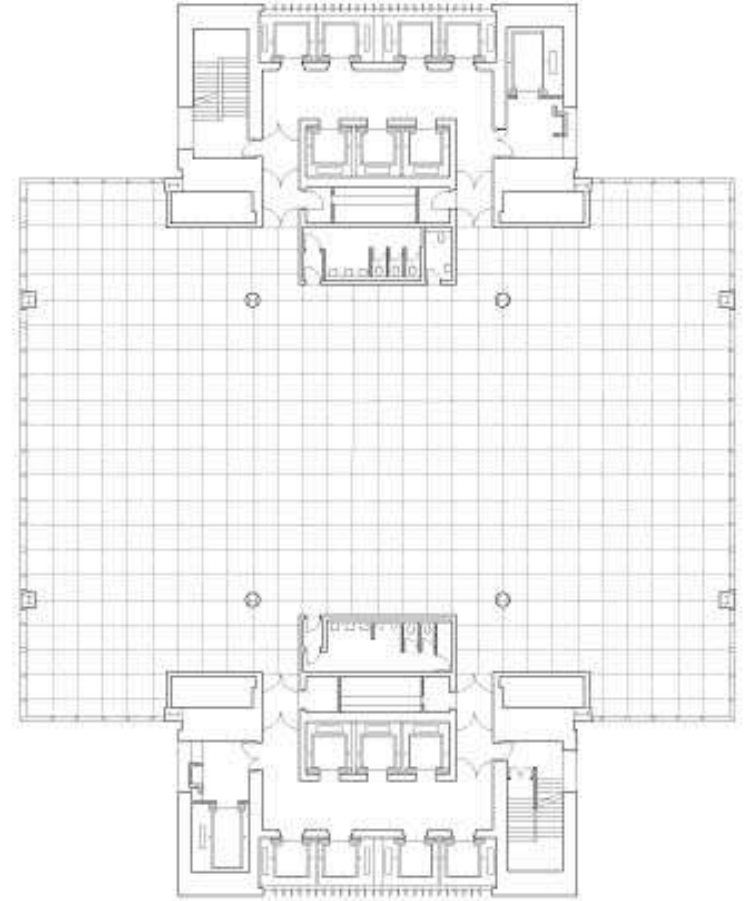
3. STRUCTURE

- Architectural frame Vierendel.
- Two lateral concrete cores.
- Combination of steel beams (metal sheets).



4. INDOORS DESCRIPTION

- **GROUND LEVEL:** 22-metre-high glazed atrium provides the transition from the street.
- **TOP OF THE BUILDING:** the void beneath the uppermost section of the 'portal' frame is designed to house wind turbines.



5. BUILDING'S STRATEGIES

- Be partly sub-let if required.
- Pushing the service cores to the edges of the plan: adaptability.
- North-south orientation: natural shade and spectacular views.
- Triple-glazing: energy efficiency.



WHY THIS TOWER?

